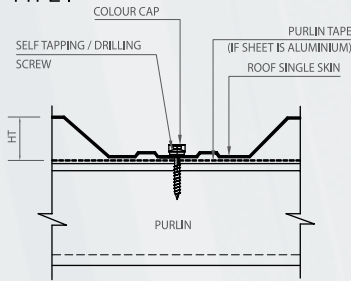


Fixing Techniques

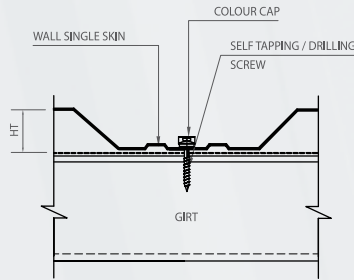
Fixing Techniques for Profiled Single Skin Sheets

TYPE I



Fixing Detail of Roof Single Skin

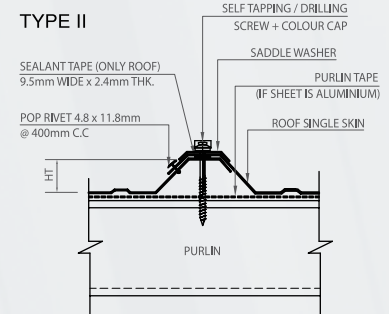
- at every low corrugation on end and overlapping purlins
- at alternative low corrugation on intermediate purlins



Fixing Detail Of Wall Single Skin

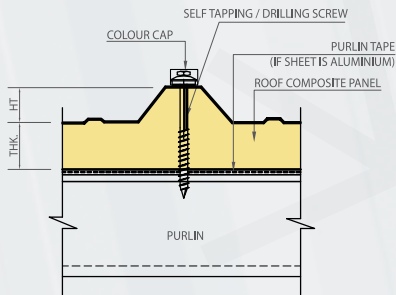
- at every low corrugation on end and overlapping purlins
- at alternative low corrugation on intermediate purlins

TYPE II



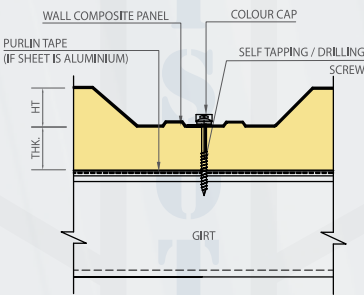
Side-lap detail of roof Single Skin Sheet

Fixing Techniques for Profiled Composite Panels



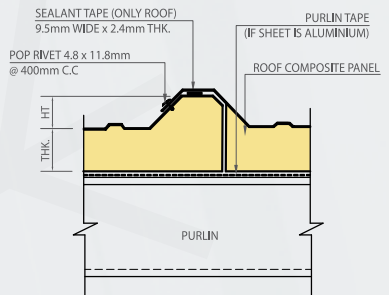
Fixing detail of Roof Composite Panel

- at every high corrugation on end and overlapping purlins
- at alternative high corrugation on intermediate purlins



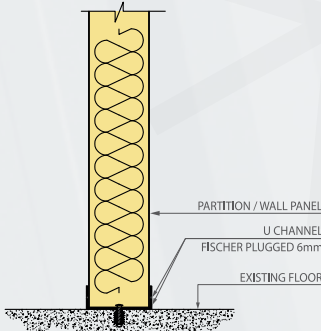
Fixing Detail of Wall composite panel

- at every low corrugation on end and overlapping purlins
- at alternative low corrugation on intermediate purlins

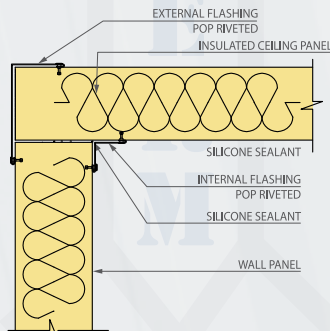


Side-lap detail of roof composite panel

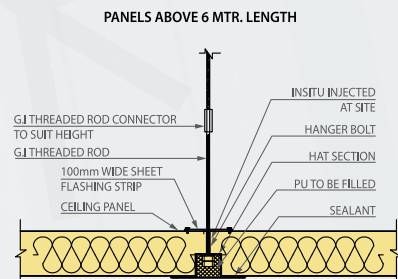
Fixing Techniques for Wall Panel - Cold Store



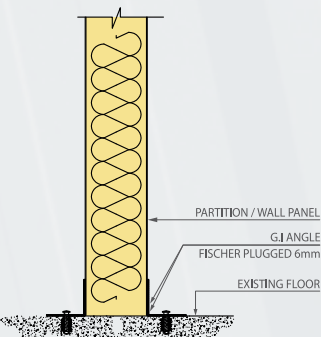
Wall Fixing detail for Dry Store



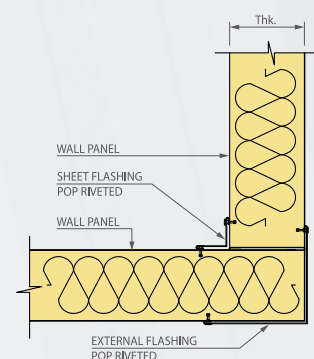
Ceiling/Wall Joint Detail



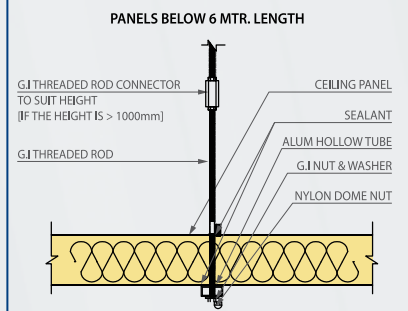
Ceiling Suspension with Hat Section



Wall Fixing detail for Cold Store



Wall/Wall Joint Detail



Ceiling Suspension with Hollow Tube